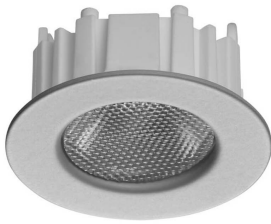


Geppetto

GEPETTO 1W 36° 4500K IP20 chrome
KIT 3PCS

Cod: **MIC0016**



IP20
Protected from solid bodies larger than 12 mm



III
Protection class III



CRI >80
Colour rendering index >80



ReeR warranty
ReeR guarantees the product for a time duration of 3 years



Technical description

Product code: MIC0016 | Category: Indoor luminaires | Model: Geppetto | Product description: GEPETTO 1W 36° 4500K IP20 chrome KIT 3PCS | Source type: COB | Color temperature (CCT): 4500K | Color render index (CRI): > 80 | MacAdam (SDCM): < 3 | Lumen output (lm): 140 | Beam angle: 36° | Photobiological risk: RG1 (low risk) | LED Lifetime: 50.000 h | Diameter (mm): 30 | Height (mm): 13,85 | Recess hole (mm): Ø 26 | Weight (g): 15 | IP rating: IP 20 | Finishing colour: Chrome | Type of finishing: Polyester powder coated | Body material: Steel | Diffuser material: PC (polycarbonate) | Maximal working temperature: +0° C | Minimal working temperature: +35° C | Nominal power (W): 1 | Power supply: 8,5V 350 mA | Ballast: Not included | Insulation class: III | Dimmable: No |

Lighting data

Source type	COB	Beam angle	36°
Color temperature (CCT)	4500K	Photobiological risk	RG1 (low risk)
Color render index (CRI)	> 80	LED Lifetime	50.000 h
MacAdam (SDCM)	< 3		
Lumen output (lm)	140		

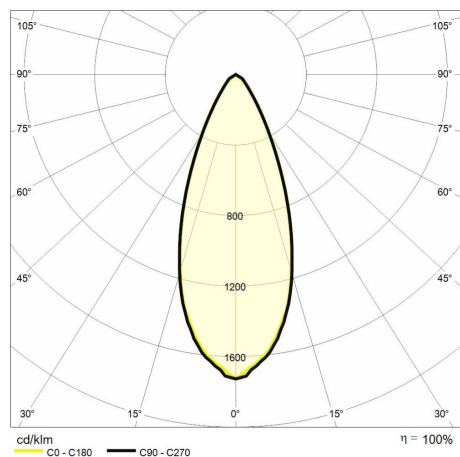
Mechanical data

Diameter (mm)	30	Finishing colour	Chrome
Height (mm)	13.85	Type of finishing	Polyester powder coated
Recess hole (mm)	Ø 26	Body material	Steel
Weight (g)	15	Diffuser material	PC (polycarbonate)
IP rating	IP 20		

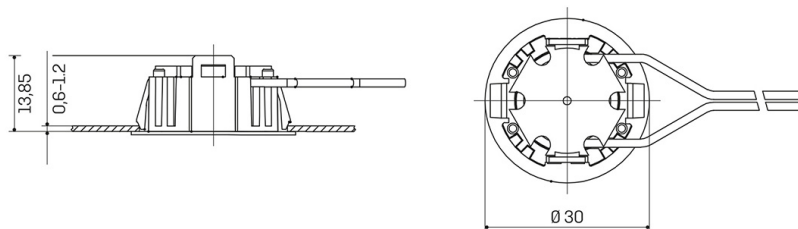
Electrical data

Nominal power (W)	1	Dimmable	No
Power supply	8,5V 350 mA		
Ballast	Not included		
Insulation class	III		

Photometry



Technical drawing



Accessories



Caleido power supply

LED POWER SUPPLY 4W 350MA
CONSTANT CURRENT 2-11,5V
Cod: MID0002